

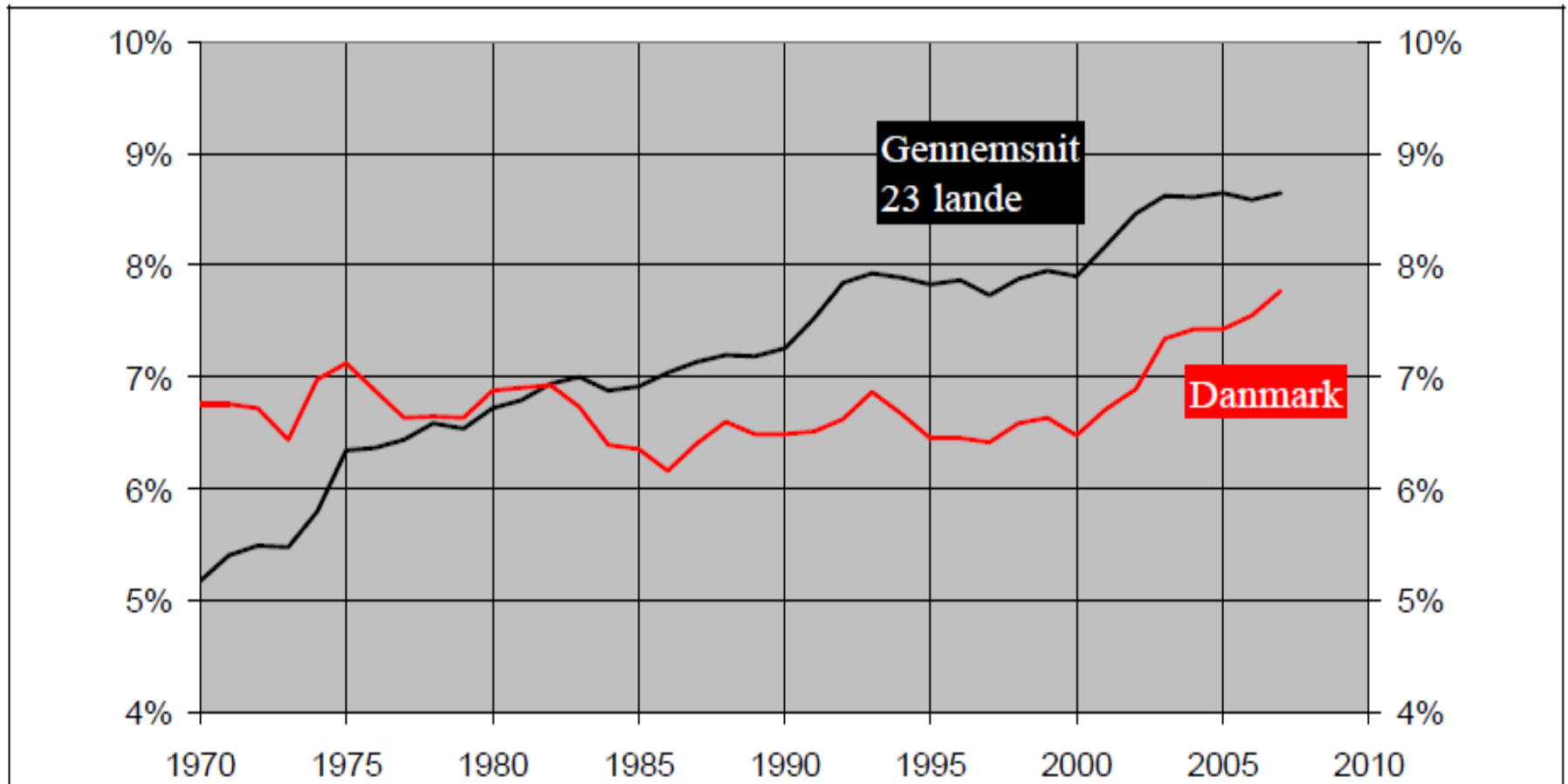
Productivity in the danish health sector?

1. Financing?
2. Production?
3. What about the employees?

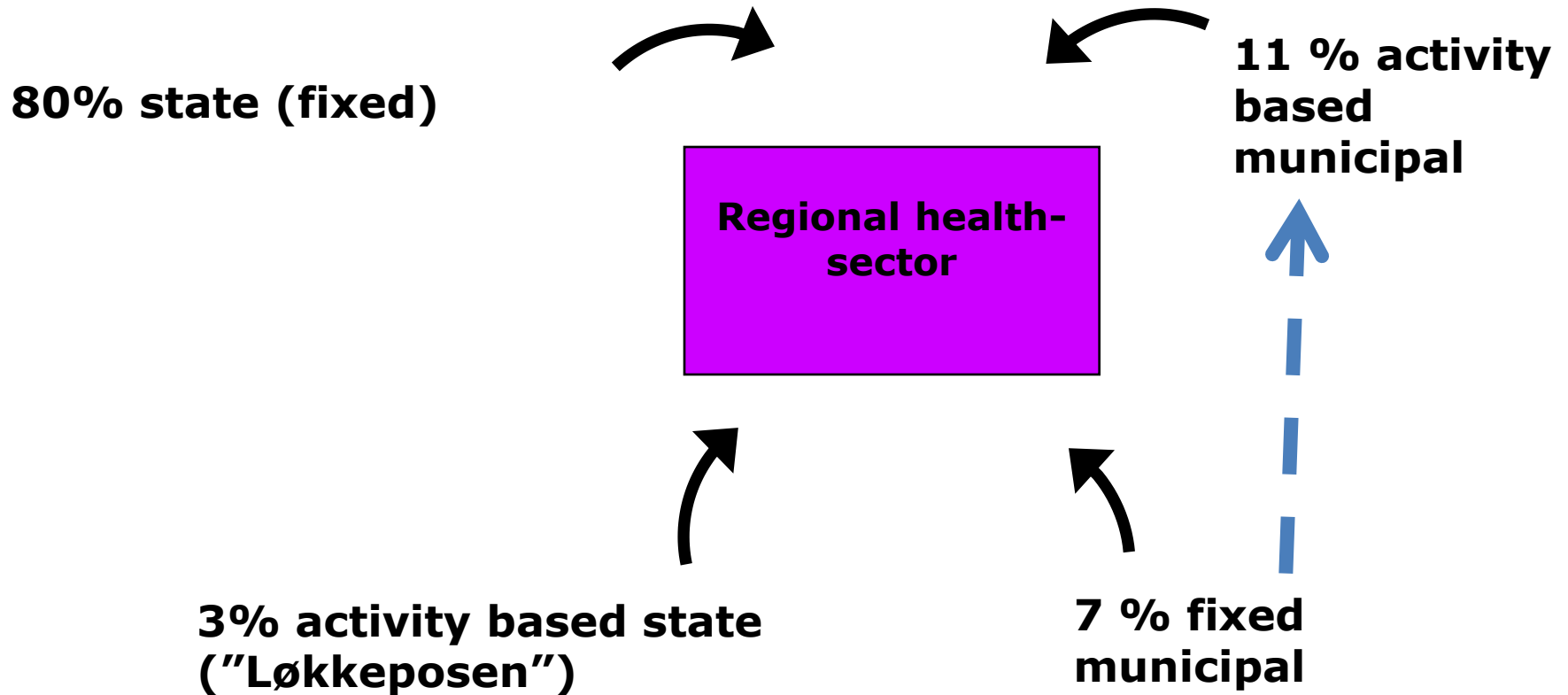


The danish "succes" – but what about productivity?

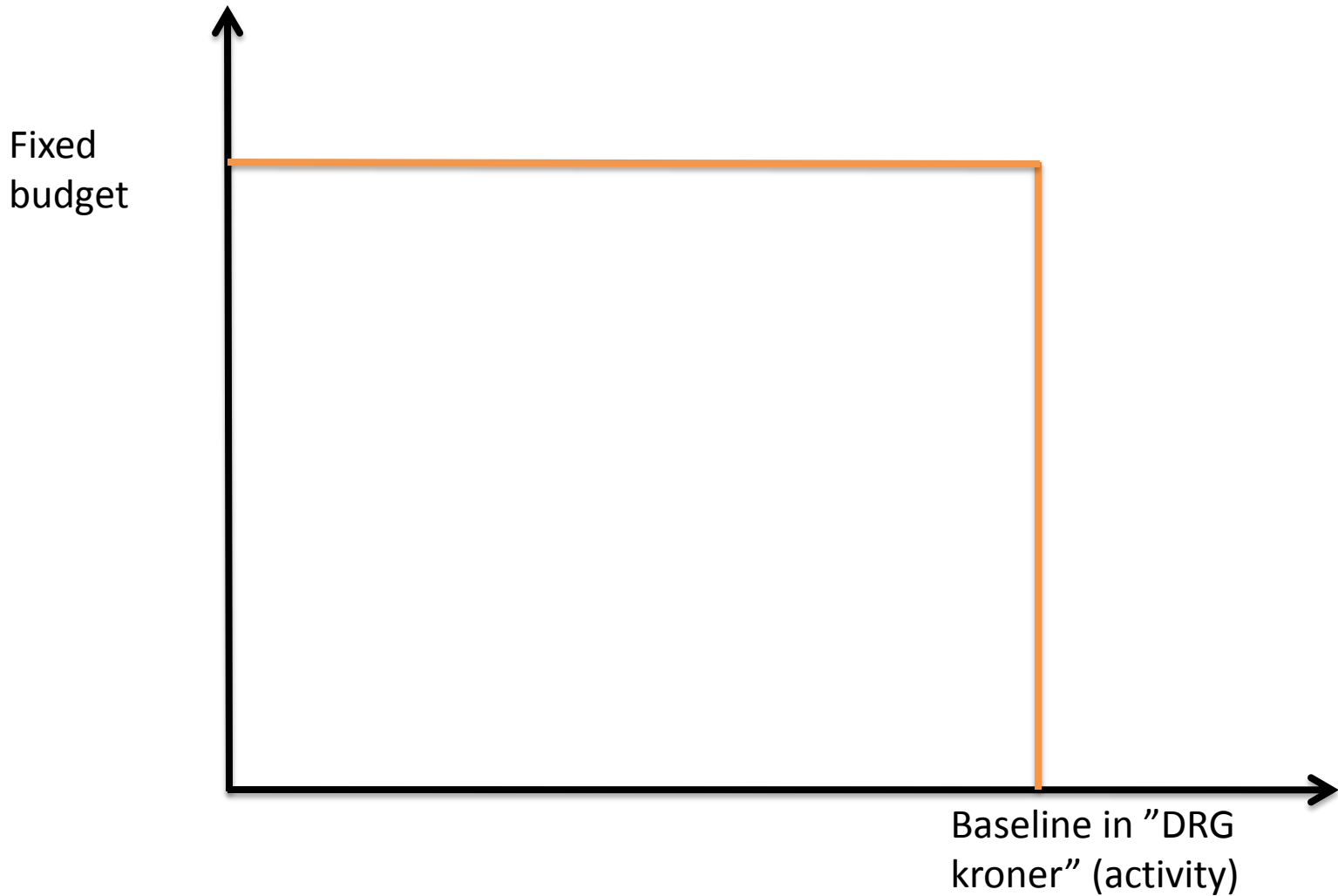
Figur 2: Sundhedsudgifter som procent af BNP i Danmark og gennemsnit for 23 OECD lande



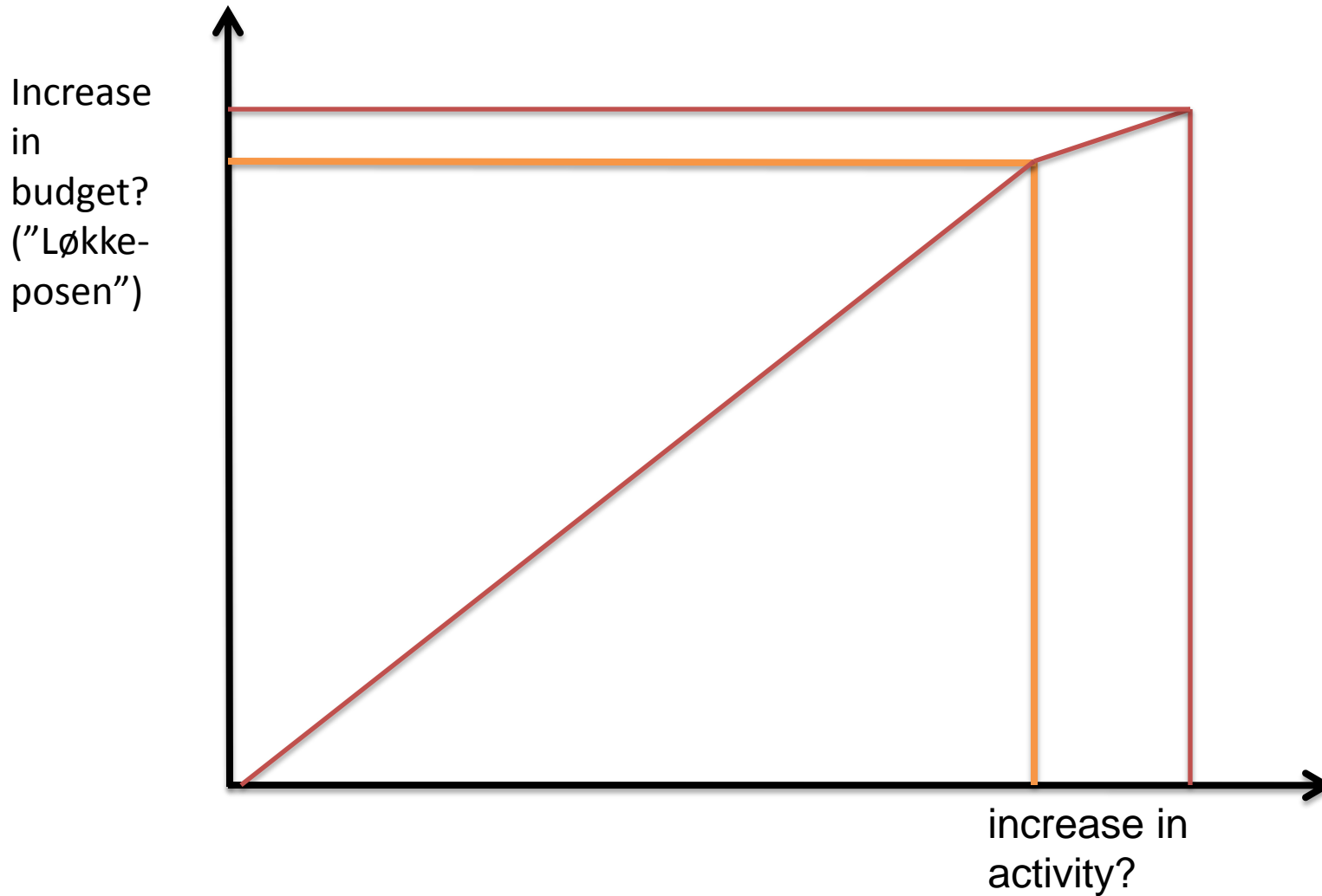
Financing the public health-sector



Traditional, global budget - framework

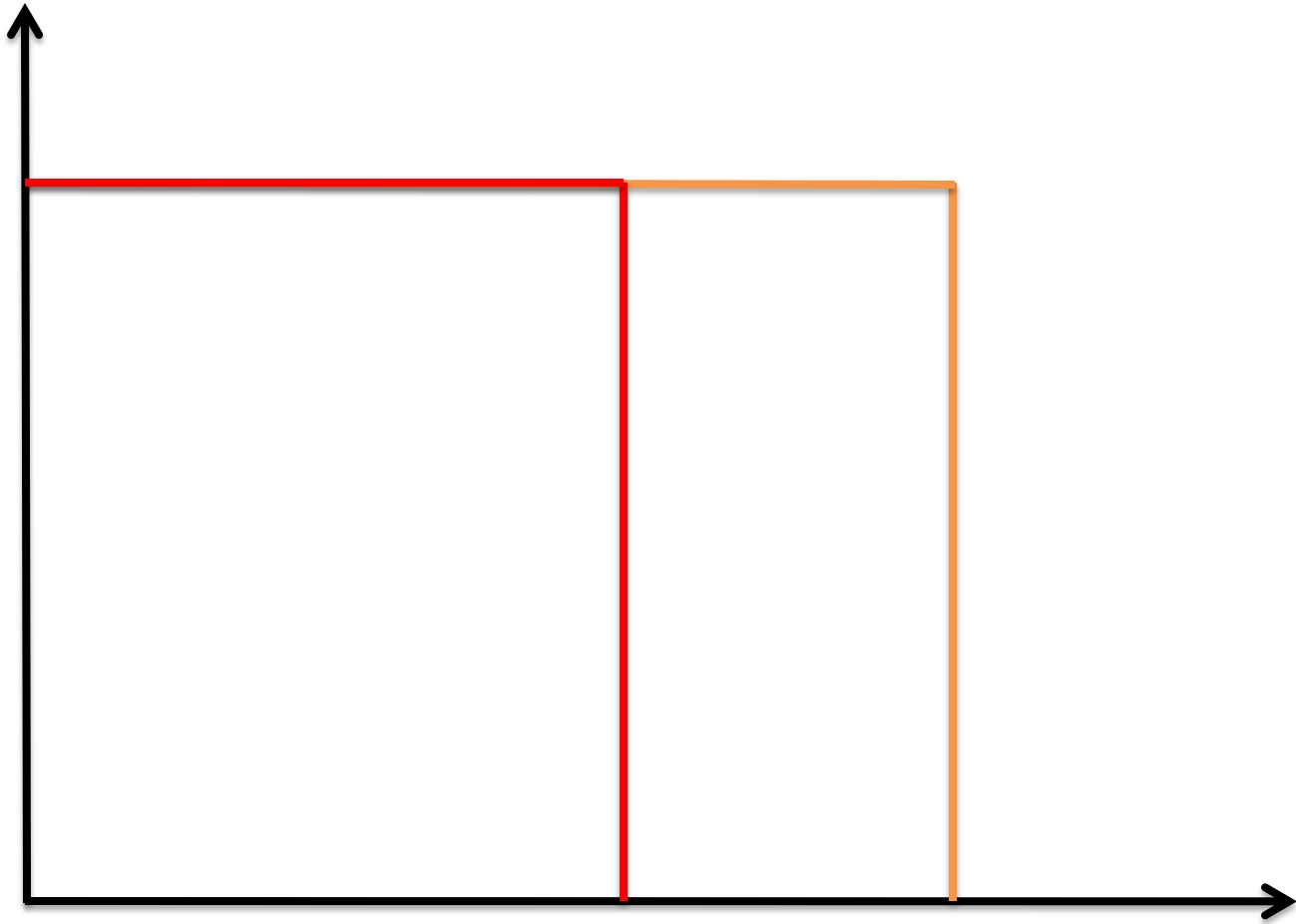


Activity Based Budgets (ABB)

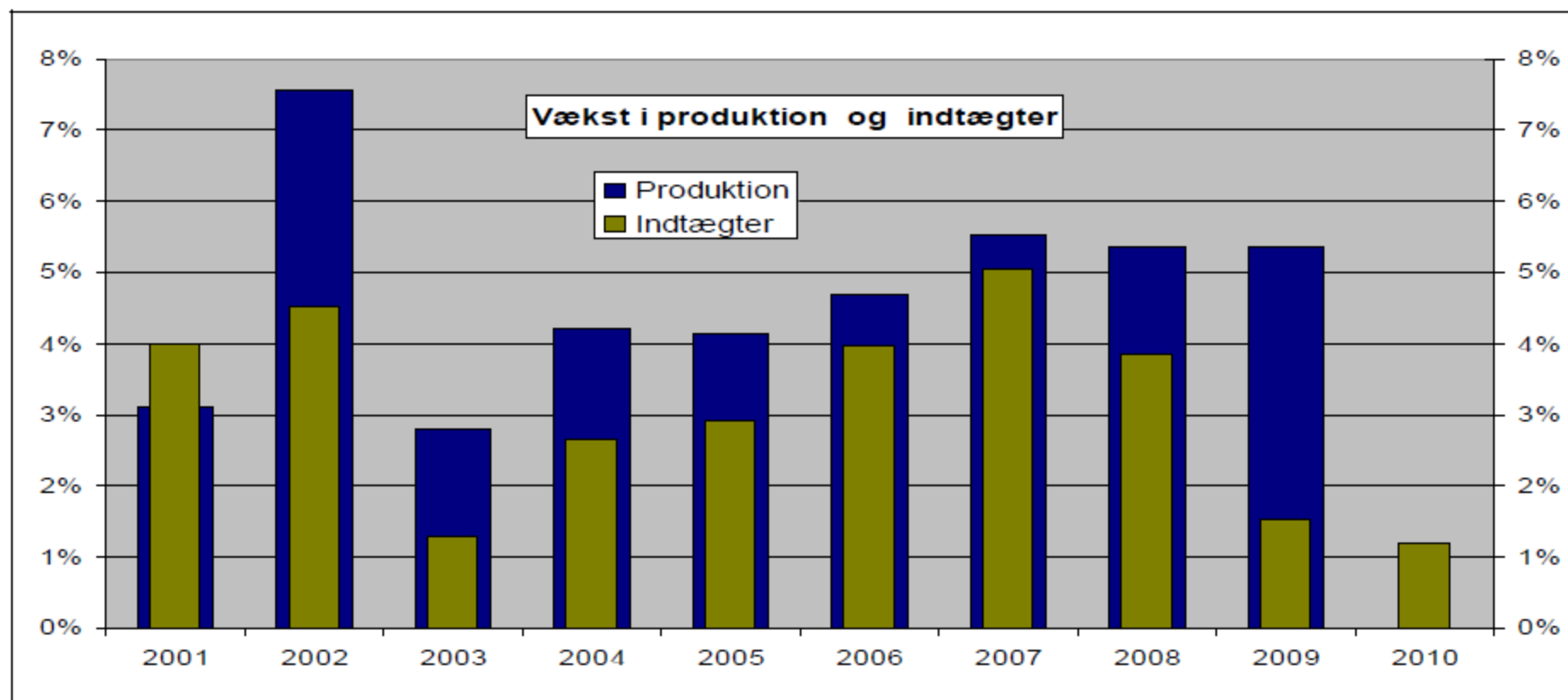


Productivity requirements?

Yearly increase in productivity on less than 2%:



Figur 4: forholdet mellem regionernes vækst i produktion og vækst i indtægter i procent

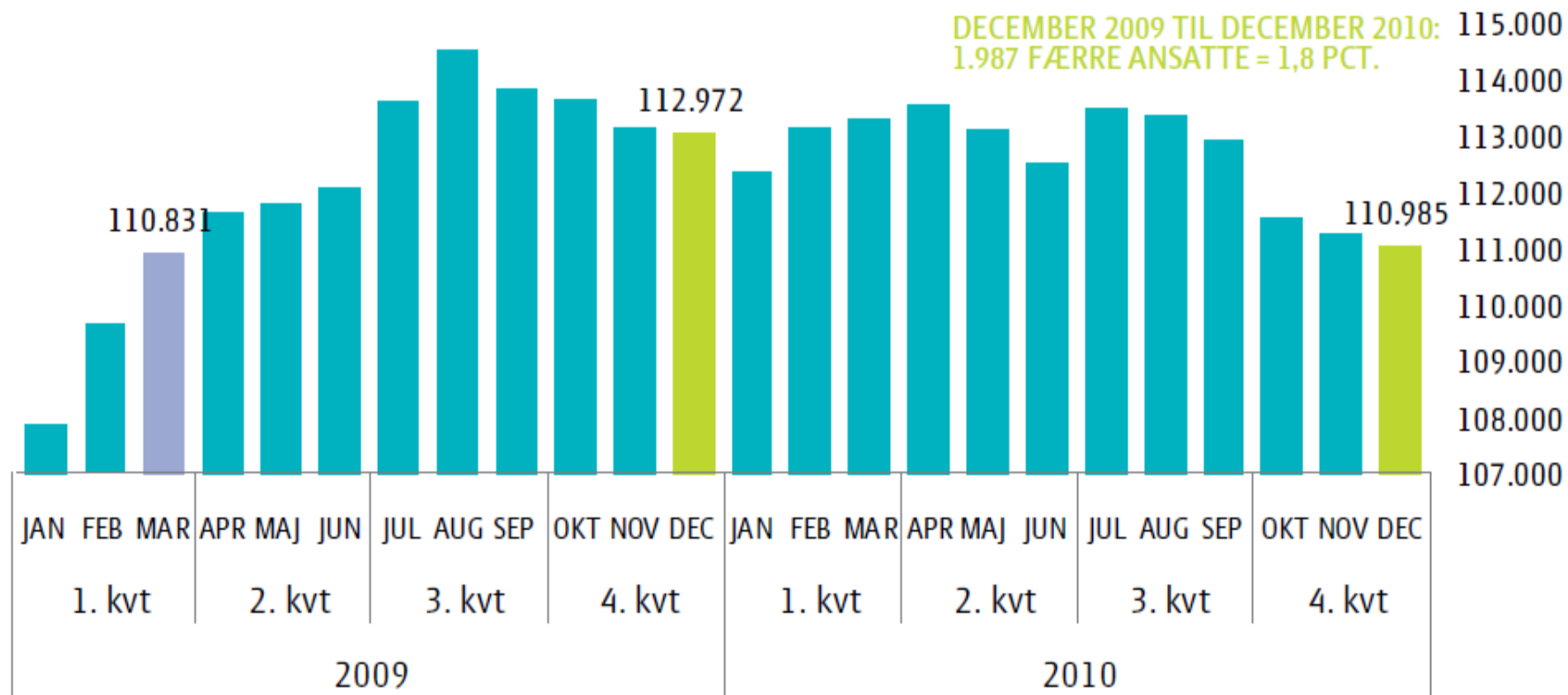


Kilde: Beregnet på basis af data fra Økonomi- og Sundhedsanalyse, Danske Regioner. 2009-tal for produktion er foreløbige.



FIGUR 1

Beskæftigelsesudviklingen i regionerne samlet set i 2009 og 2010 opgjort i måneder



Anm.: Opgørelsen omfatter almindelig ansatte (overenskomst- og tjenestemandansatte) dvs. eksklusive elever og ekstraordinært ansatte.

Kilde: Det fælleskommunale Løndatakontor (FLD-data), december 2010.

Crisis in 2010 - Why?

The deficit in the regions and hospitals were built up gradually

Never have we moved so much around

Cancerprograms and other priorities

Patients in hospitals are more complex and require more treatments

Some places have not quite had the overview of production

Productivity at ward-level?

- A "blind" continuation of the state requirement for 2% productivity growth?
- 2% of a budget of, say, 2 billion in a region or a hospital's budget is easier to handle than 2% of a budget of 40 million in a hospital ward!

Can anyone do the job for less money?

Projects: IT solutions, LEAN, Changes in equipment, organization, facilities, etc.?

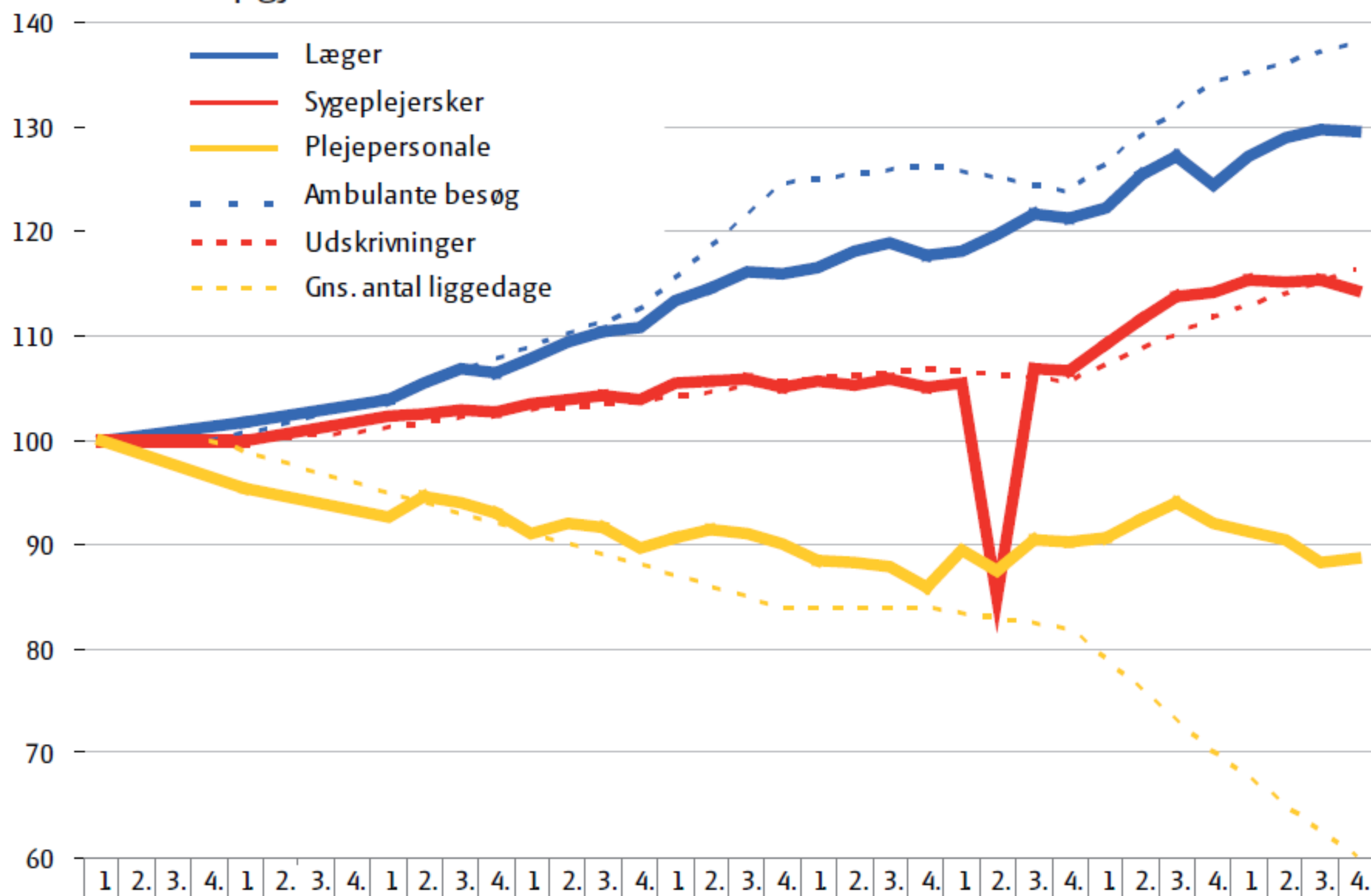
Day to day: Work organization, Work-sharing, Job-swapping?

Administration, registrations?

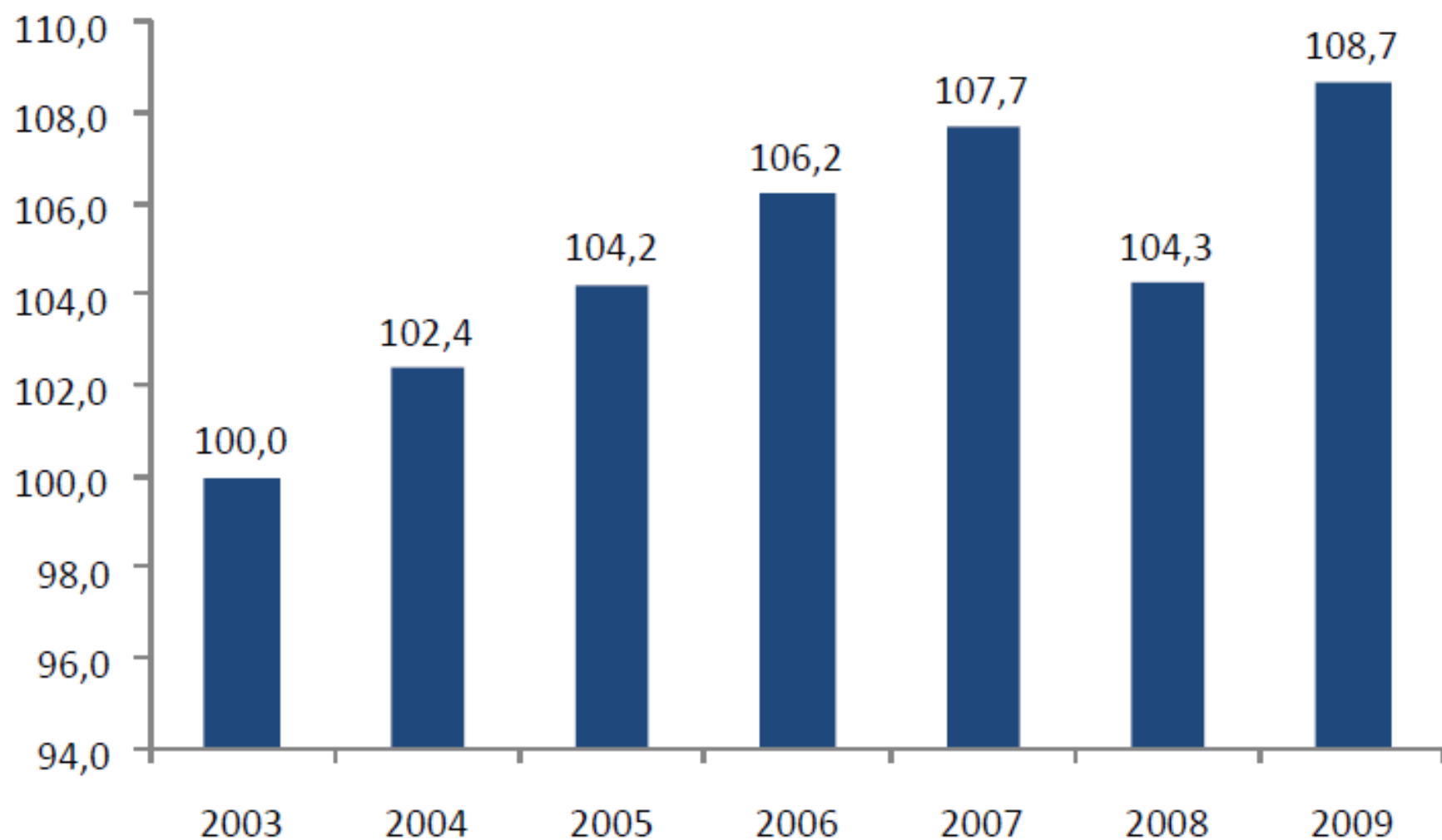
NB: The requirements are in fact quite different (university or factory?)

FIGUR 2

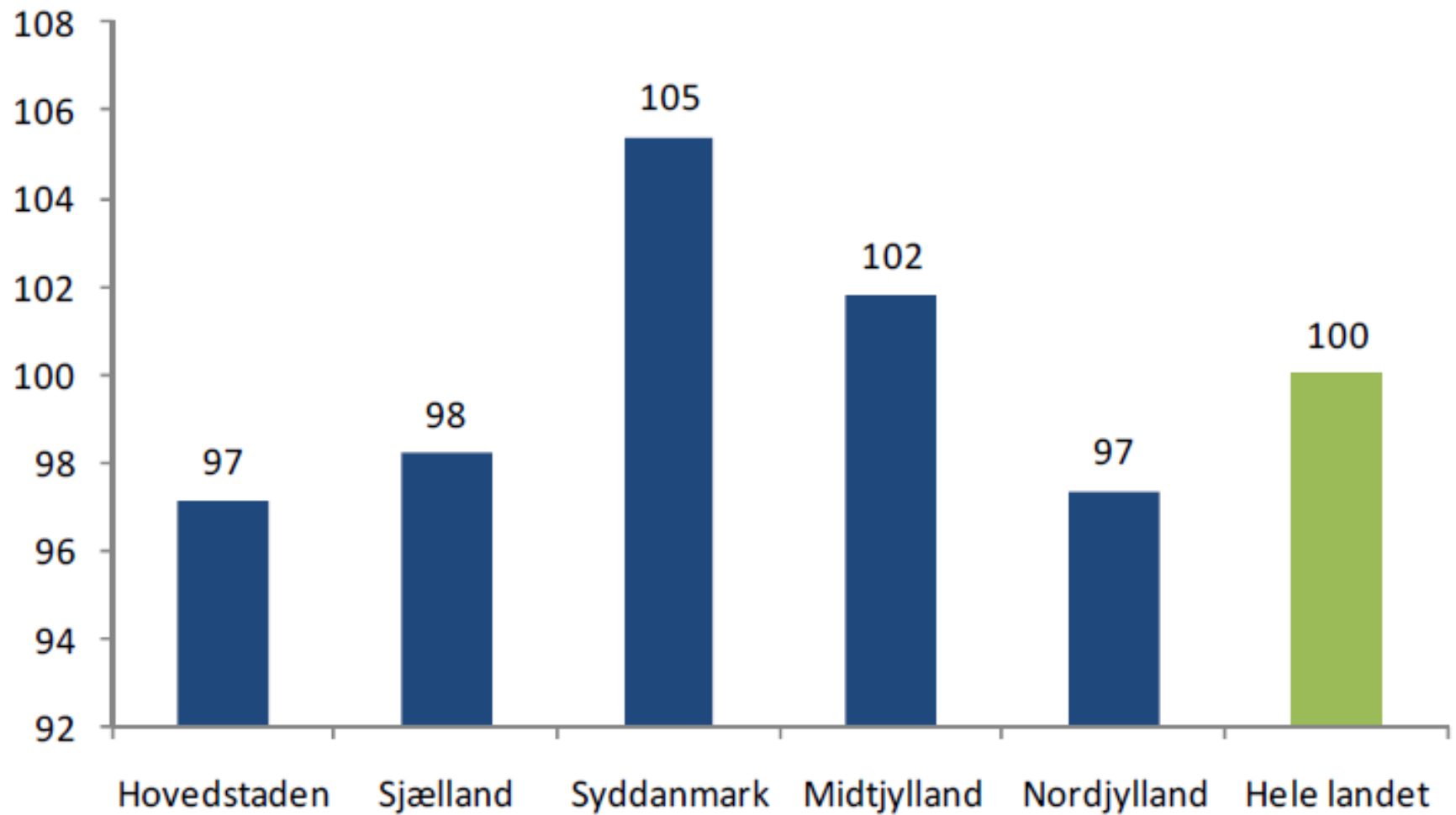
Udvikling i beskæftigelse og aktivitet på offentlige sygehuse 2002 til 2010 (2002=100) opgjort i kvartaler



Figur 3: Den akkumulerede produktivitetsudvikling, 2003-2009. Indeks 2003=100



Figur 1: Produktivetsniveau på regionsniveau, 2009. Indeks hele landet=100



Figur 2: Indsæt produktivetsniveau på sygehusniveau.

